

## Logis

**Single lever basin mixer for concealed installation Fine wall-mounted with spout 20,6 cm**

Finish: **Chrome** Article Number: **71256000**



### Description

#### product features

- consists of: single lever basin mixer for concealed installation wall-mounted, waste set
- projection: 206 mm
- handle variant: lever handle
- spray type: normal spray
- maximum flow rate at 3 bar: 5 l/min
- ceramic cartridge
- temperature limitation adjustable
- suitable for continuous flow water heaters
- non-closing waste set
- material waste set: metal
- connection type: basic set
- connection dimension: DN15
- handle can be positioned on the right or left, depending on the basic set installation
- EU taxonomy: max. 6 l/min - Substantial Contribution (SC) possible

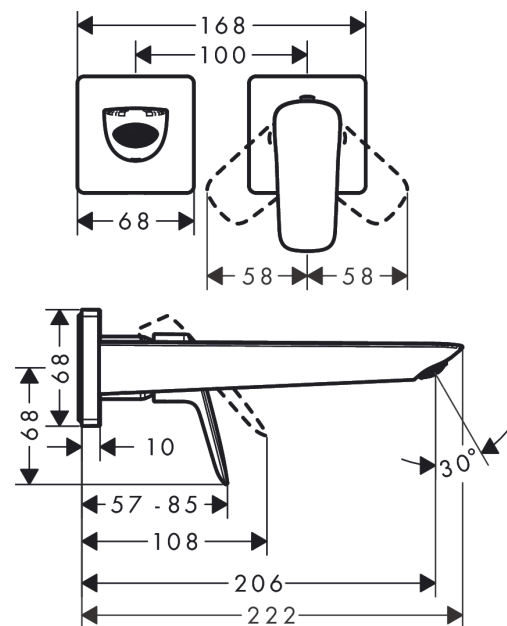
### Technology



### Product image



### Scale drawing



## Logis

**Single lever basin mixer for concealed installation Fine wall-mounted with spout 20,6 cm**

Finish: **Chrome** Article Number: **71256000**



## Flowchart



**Logis**

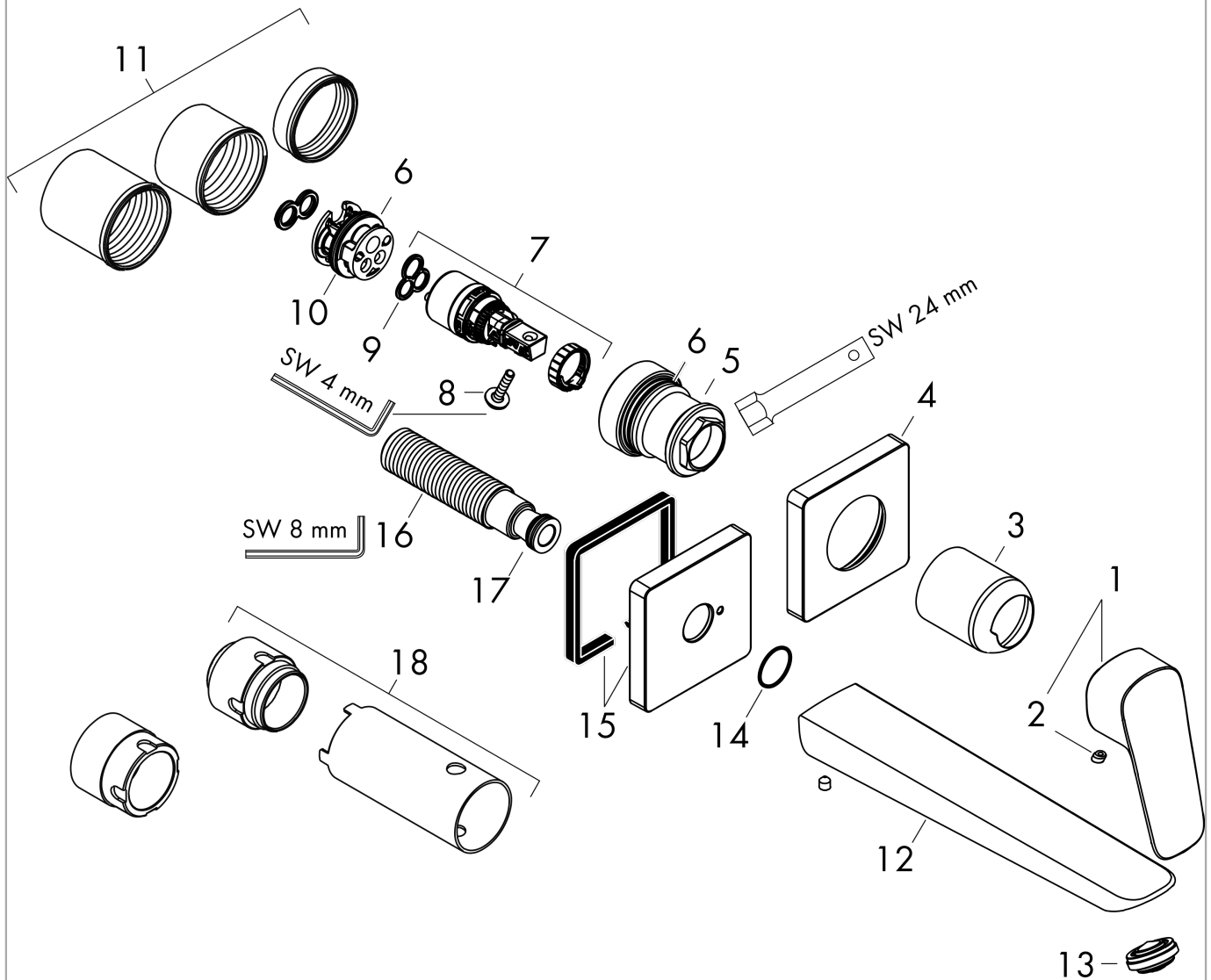
**Single lever basin mixer for concealed installation Fine wall-mounted with spout 20,6 cm**

Finish: **Chrome** Article Number: **71256000**



**Exploded Drawing**

Year of production: >05/21



## Logis

**Single lever basin mixer for concealed installation Fine wall-mounted with spout 20,6 cm**

Finish: **Chrome** Article Number: **71256000**



## Spare part list

Year of production: >05/21

Pos.	Description	Article Number	PC	PU
1	handle	94400000	8	1
2	screw cover	96338000	1	1
3	sleeve	93053000	9	1
4	escutcheon for handle	93161000	11	1
5	nut	93141000	9	1
6	O-ring 26x2	98147000	1	1
7	cartridge, assy	97685000	11	1
8	locking screw for handle	95140000	2	1
9	seal	98865000	8	1
10	adapter for cartridge	95634000	4	1
11	fixing set	97971000	9	1
12	spout cpl.	94401000	11	1
13	aerator M24x1 (5 l/min)	94364000	3	1
14	O-ring 18x1,5	98231000	1	1
15	escutcheon for spout	93162000	9	1
16	connecting thread G½	95626000	10	1
17	O-ring 13x2	98128000	1	1
18	extension set 25 mm for 13622180	31971000	98	1
a	base body	13622180	98	1
b	waste	50001000	98	1
c	adapter for exchanged connections	93819000	16	1