

ShowerSelect

Thermostat for concealed installation for 2 functions with hose connection and shower holder

Finish: **Chrome** Article Number: **15765000**



Description

product features

- consists of: thermostat, shower holder
- 2 functions
- simultaneous use of several outlets
- Select push-button on/off control for 2 outlets
- thermostat cartridge, Start/stop valve to operate the functions
- flow rate of hand shower at 3 bar: 14 l/min
- flow rate upper outlet: 29 l/min
- maximum flow rate at 3 bar: 29 l/min
- min. operating pressure: 1 bar
- max. operating pressure: 10 bar
- Safety stop at 40 °C
- temperature limitation adjustable
- for shower hoses with a conical nut
- connection type: basic set
- thermostat is delivered with buttons hand shower and Rain large

Technology



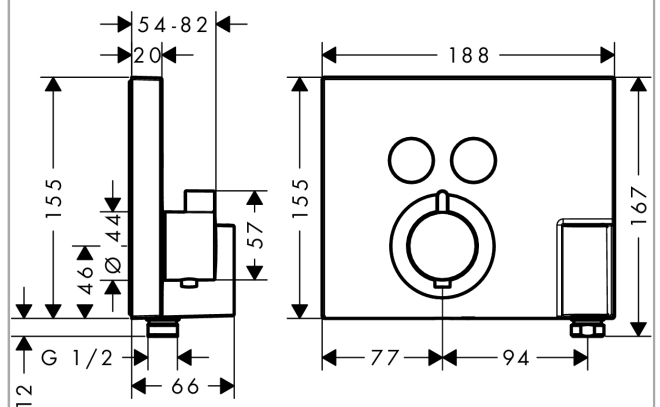
Certificates / Sustainability



Product image



Scale drawing



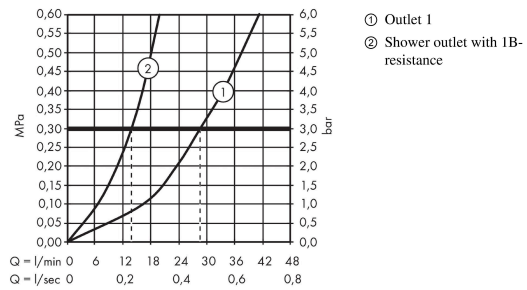
ShowerSelect

Thermostat for concealed installation for 2 functions with hose connection and shower holder

Finish: **Chrome** Article Number: **15765000**



Flowchart



ShowerSelect

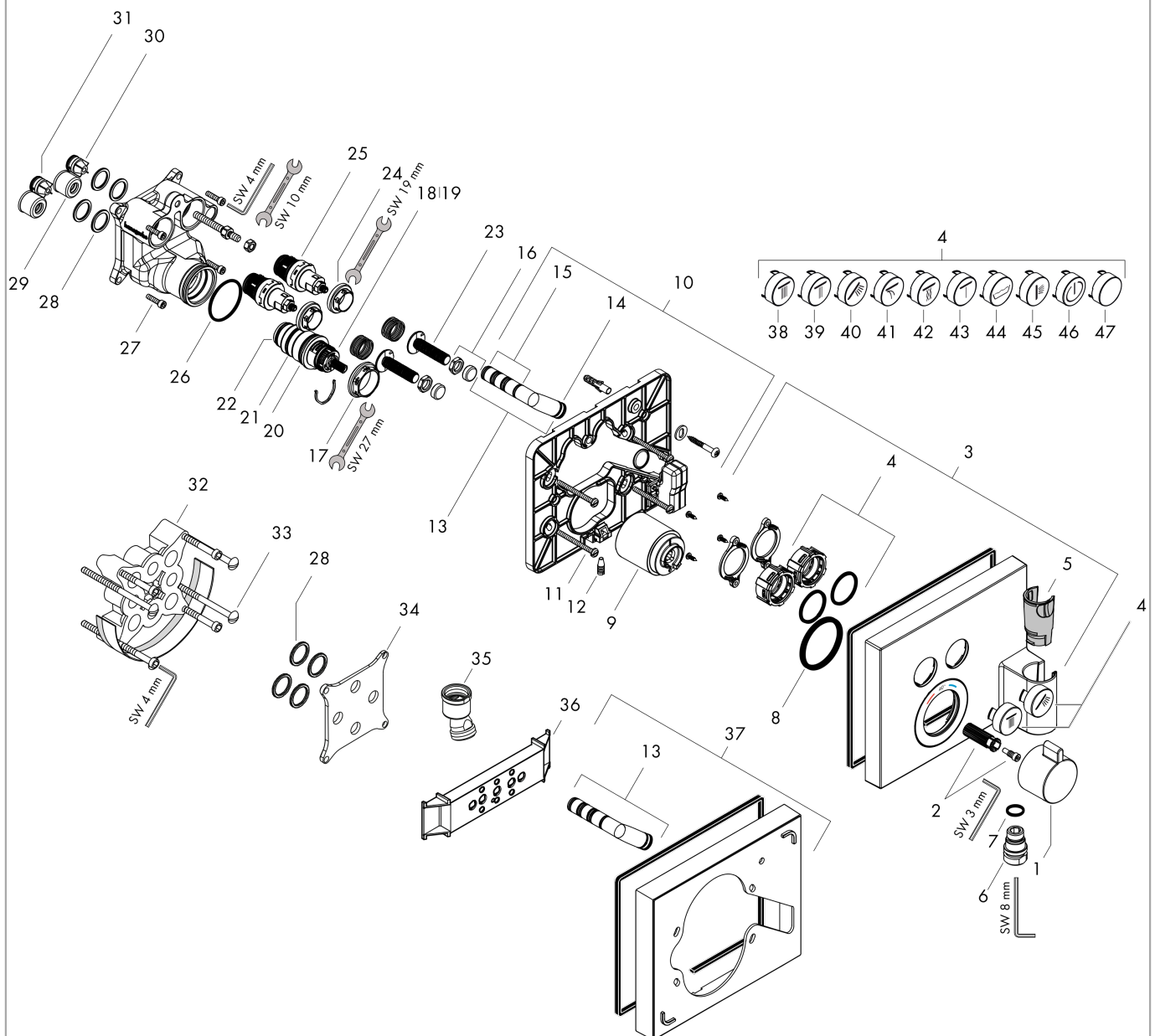
Thermostat for concealed installation for 2 functions with hose connection and shower holder

Finish: **Chrome** Article Number: **15765000**



Exploded Drawing

Year of production: >03/15



ShowerSelect

Thermostat for concealed installation for 2 functions with hose connection and shower holder

Finish: **Chrome** Article Number: **15765000**



Spare part list

Year of production: >03/15

Pos.	Description	Article Number	PC	PU
1	handle for thermostat	92215000	11	1
2	handle fixing set	95843000	3	1
3	escutcheon	92299000	19	1
4	set of symbols	92218000	12	1
5	guide	95531000	2	1
6	Hose Connection	92448000	8	1
7	O-ring 12x2	98214000	1	1
8	O-ring 44x4	98471000	3	1
9	sleeve	92216000	8	1
10	holder for escutcheon	92298000	16	1
11	set of fixing screws	96454000	3	1
12	screw	97795000	3	1
13	extension set	92744000	5	1
14	O-ring 11x1,5	98385000	1	1
15	O-ring 10x1,5	98123000	1	1
16	nut and flange	92696000	5	1
17	nut	98913000	6	1
18	thermostat cartridge	98282000	14	1
19	cartridge for exchanged connections	92373000	18	1
20	O-ring 25x2,5	92146000	3	1
21	O-ring 25x1,5	98146000	2	1
22	O-ring 20x1,5	98197000	1	1
23	Select-adapter	92219000	2	1
24	nut	98368000	4	1
25	shut off unit	95758000	14	1
26	O-ring 36x2	98156000	1	1
27	set of screws	96525000	3	1
28	O-ring 16x2	98133000	1	1
29	noise reduction	94073000	7	1
30	non return valve	97980000	5	1
31	non return valve (pressure-resistant up to 2 MPa)	92594000	5	1
32	extension 25 mm	13595000	99	1
33	set of fixing screws	97747000	1	1
34	compensation set 1°	95521000	16	1
35	ball joint	13583000	99	1
36	fit-up aid	92540000	99	1
37	extension 22 mm	13601000	99	1
38	symbol head shower Rain large	93571880	3	1
39	symbol head shower Rain small	93572880	3	1
40	symbol handshower	93573880	3	1
41	symbol Flood jet	93574880	3	1

ShowerSelect

Thermostat for concealed installation for 2 functions with hose connection and shower holder

Finish: **Chrome** Article Number: **15765000**



Spare part list

Year of production: >03/15

Pos.	Description	Article Number	PC	PU
42	symbol Whirl	93575880	3	1
43	symbol Mono	93576880	3	1
44	symbol tub	93577880	3	1
45	symbol body shower	93578880	3	1
46	symbol ON/OFF	93579880	3	1
47	pushbutton	93955880	6	1
a	concealed item	01800180	99	1
b	adapter for exchanged connections	93181000	18	1
c	brake disc	92498000	3	1
d	Grease	90920000	5	1