

Vernis Blend
Showerpipe 200 1jet EcoSmart with thermostat
 Finish: **Chrome** Article Number: **26089000**



Description

product features

- consists of: overhead shower, hand shower, shower thermostat, shower hose, shower bar, slider
- overhead shower Vernis Blend 200 1jet
- shower head size overhead shower: 205 mm
- spray type overhead shower: Rain
- spray type hand shower: Rain, IntenseRain
- flow rate of hand shower at 3 bar: 6,8 l/min
- maximum flow rate for Showerpipe at 3 bar: 6,8 l/min
- minimum flow pressure: 1 bar
- max. operating pressure: 10 bar
- ball-joint: overhead shower angle adjustable
- height-adjustable slider with locking push-button slider
- shower arm length overhead shower: 426 mm
- thermostat Vernis
- SafetyStop at 40°C
- adjustable hot water limitation
- outlets controlled via turning handle
- suitable for continuous flow water heaters
- mounting type: exposed installation
- connection dimension: DN15
- connection thread: G ½
- centre distance: 150 ± 12 mm
- intrinsically safe against backflow
- shower bar diameter: 19 mm
- 2 functions
- EU taxonomy: max. 8 l/min - Do No Significant Harm (DNSH)

Technology



Certificates / Sustainability



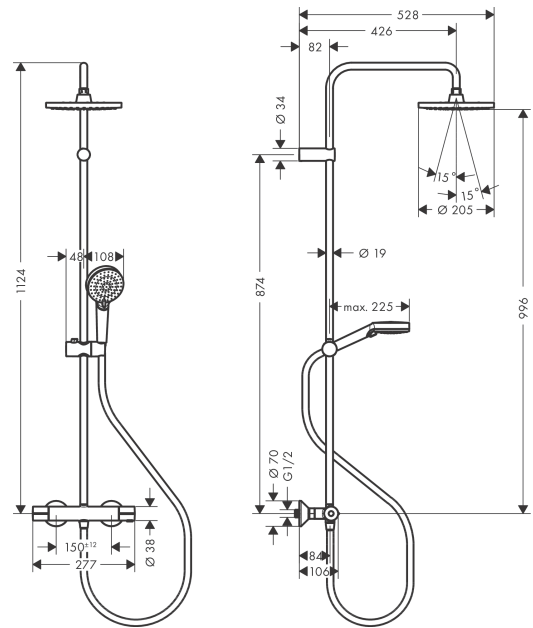
Vernis Blend
Showerpipe 200 1jet EcoSmart with thermostat
 Finish: **Chrome** Article Number: **26089000**



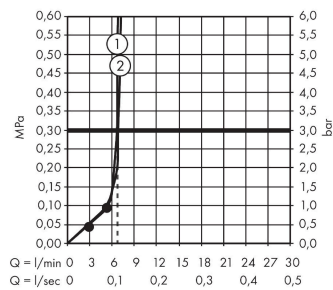
Product image



Scale drawing



Flowchart

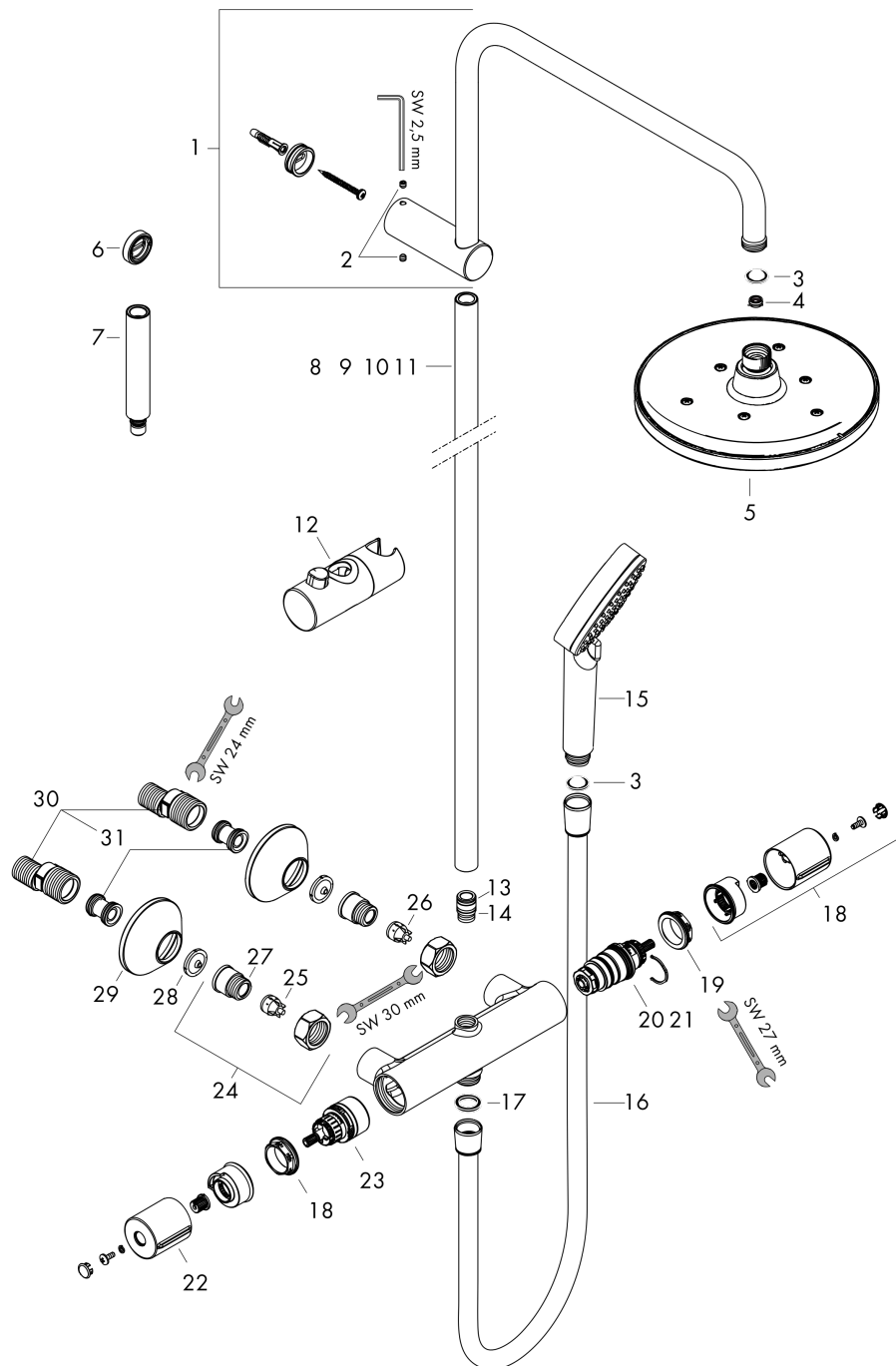


Vernis Blend
Showerpipe 200 1jet EcoSmart with thermostat
 Finish: **Chrome** Article Number: **26089000**



Exploded Drawing

Year of production: >06/24



Vernis Blend
Showerpipe 200 1jet EcoSmart with thermostat
 Finish: **Chrome** Article Number: **26089000**



Spare part list

Year of production: >06/24

| Pos. | Description | Article Number | PC | PU |
|------|---|----------------|----|----|
| 1 | shower arm | 93768000 | 13 | 1 |
| 2 | hollow set screw M5x5 | 98446000 | 1 | 1 |
| 3 | filter packing | 94246000 | 1 | 1 |
| 4 | flow limiter | 87836000 | 3 | 1 |
| 5 | head shower | 26277000 | 98 | 1 |
| 6 | tile-matching-disk 7 mm | 93813000 | 5 | 1 |
| 7 | extension 100 mm | 94164000 | 9 | 1 |
| 8 | pipe 546 mm | 93769000 | 10 | 1 |
| 9 | pipe 845 mm | 93906000 | 12 | 1 |
| 10 | pipe 945 mm | 93770000 | 12 | 1 |
| 11 | pipe 1145 mm | 93907000 | 12 | 1 |
| 12 | support, assy | 93729000 | 8 | 1 |
| 13 | O-ring 12x2 | 98214000 | 1 | 1 |
| 14 | O-ring 11x2 | 98127000 | 1 | 1 |
| 15 | handshower | 26340000 | 98 | 1 |
| 16 | shower hose Metaflex'C 1,60 m | 28266000 | 98 | 1 |
| 17 | seal | 98058000 | 1 | 1 |
| 18 | handle for thermostat | 93727000 | 9 | 1 |
| 19 | nut | 98913000 | 6 | 1 |
| 20 | thermostat cartridge | 98282000 | 14 | 1 |
| 21 | cartridge for exchanged connections | 92373000 | 18 | 1 |
| 22 | handle | 93731000 | 8 | 1 |
| 23 | shut off unit with selector | 98283000 | 12 | 1 |
| 24 | connecting thread G½ | 93730000 | 9 | 1 |
| 25 | non return valve (pressure-resistant up to 2 MPa) | 93136000 | 8 | 1 |
| 26 | non return valve | 96737000 | 8 | 1 |
| 27 | O-ring 16x2 | 98133000 | 1 | 1 |
| 28 | filter packing | 96922000 | 3 | 1 |
| 29 | escutcheon Ø 70 mm | 93718000 | 4 | 1 |
| 30 | set of S-unions (±12 mm) | 94140000 | 10 | 1 |
| 31 | noise reduction | 96429000 | 2 | 1 |