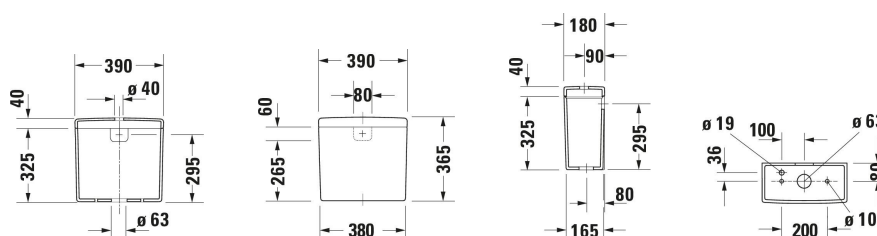


## Starck 3 Cistern # 0920100005 / 0920100085

| < 390 mm > |



Cistern	Dimension	Weight	Order number
Water connection position: Bottom left			
Colors			
00 White Alpin			
Variant			
♦ White, Flush water quantity: 6/3 l, Incl. mechanism, Dual Flush, Flush operation position: Top, Surface of push button: Chrome, Concealed connection, Unified Water Label (UWL) Class: 2	390x365 mm	14.000 kg	0920100005
♦ White, Flush water quantity: 4,5/3 l, Incl. mechanism, Dual Flush, Water connection position: Bottom left 3/8", Surface of push button: Chrome, Concealed connection, Unified Water Label (UWL) Class: 1	390x365 mm	14.560 kg	0920100085
Sanitary ceramics with the special WonderGliss surface finish will remain clean and attractive-looking for a long time to come. When ordering WonderGliss please add a "1" as eleventh digit to the model number.			
Accessory			
Conversion set	220 x 250 mm	0.999 kg	007624
Conversion set	310 x 30 mm	0.16 kg	007508
Suitable products			
Toilet close-coupled Flush water quantity: 6/3 l, Washdown model, Flushing rim: Closed, Outlet drain: vertical, Position outlet: Back, Bottom, Incl. cistern: No, Flush principle: washdown model, For bowl mounted cistern, Incl. mounting material, Unified Water Label (UWL) Class: 2, 370 x 655 mm	370 x 655 mm		012601
Toilet close-coupled Flush water quantity: 6/3 l, Washdown model, Flushing rim: Closed, Outlet drain: horizontal, Position outlet: Back, Incl. cistern: No, Flush principle: washdown model, 370 x 655 mm For bowl mounted cistern, Incl. mounting material, Unified Water Label (UWL) Class: 2, 370 x 655 mm			012609

Starck 3 Cistern # 0920100005 / 0920100085

|< 390 mm >|

Toilet close-coupled Flush water quantity: 4,5/3 l, Washdown model, Flushing rim: Closed, Outlet drain: horizontal, vertical, Position outlet: Back, Incl. cistern: No, Flush principle: washdown model, For bowl mounted cistern, Length adjustable, Incl. mounting material, Unified Water Label (UWL) Class: 1, 370 x 660 mm

012809

*All drawings contain the necessary measurements which are subject to standard tolerances. They are stated in mm and are non-binding. Exact measurements, in particular for customised installation scenarios, can only be taken from the finished piece.*